

High Efficiency Space Heating and Domestic Hot Water ALL-IN-ONE.

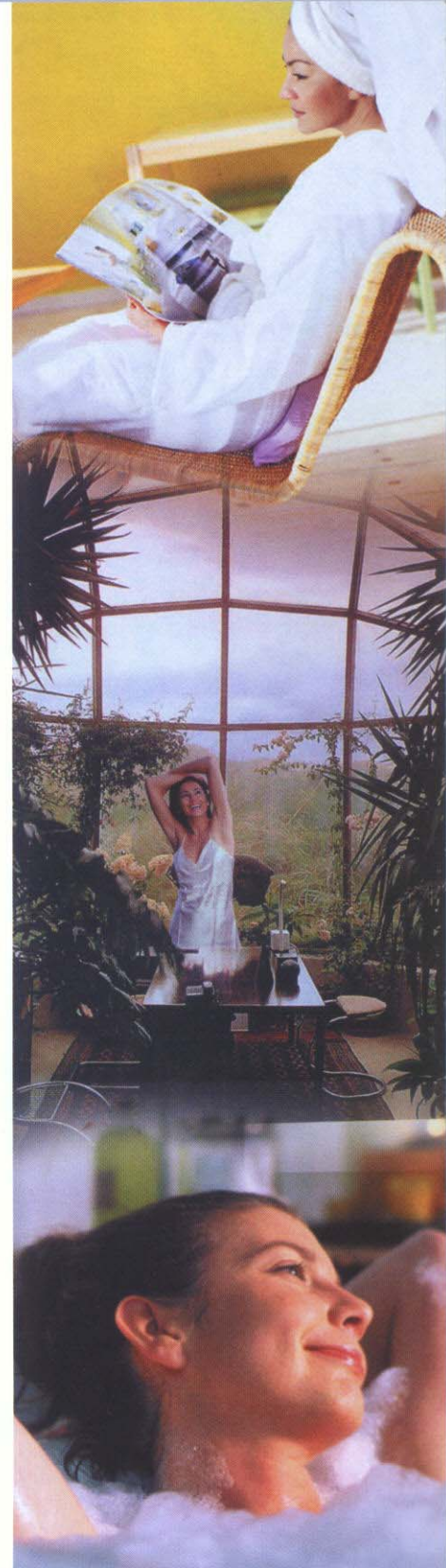
High Efficiency Condensing Stainless Steel Wall Mounted Gas Boiler with Built in "Tank-in-Tank" Indirect Fired Water Heater.



The Prestige Excellence Model Condensing Boiler also incorporates a 14 gallon Indirect Fired Water Heater in the cabinet that is capable of producing 180 gph of domestic hot water.

Features

- » 95% AFUE Efficiency
- » Fully Modulating
- » Abundant Domestic Hot Water with Standard Mixing Valve
- » Built-in Exclusive "Tank-in-Tank" Indirect Fired Water Heater
- » Built-in 3 Speed System Circulator
- » Standard Outdoor Reset
- » Quiet Operation
- » Digital Display
- » Direct Vent/Sealed Combustion



Specifications & Performance

Boiler

Model	Fuel	Input Modulation MBH	AFUE	DOE Heating Capacity MBH	NET I=B=R MBH	Boiler Water Content Gal.
PE 110	Natural Gas	30 -110	95%	99	86	2.5
PE 110 LP	Propane Gas	27 - 97	95%	87	76	2.5

Model	Fuel	Supply / Return Connections	Gas Connection	Vent/Air Diameter	Dimensions D x W x H	Weight Lbs
PE 110	Natural Gas/ Propane	1"	1/2"	3"	24.7"x 20.8" x 37.2"	190

Water Heater

Model	10 Min. Peak Flow (Gal.)	1 Hour Rating* (GPH)	Continuous Flow @70° Rise* (GPH)	Domestic Inlet/Outlet	Domestic Capacity (Gal.)	Heating Water Capacity (Gal.)
PE 110	55	210	180	3/4"	14	2.3

* Domestic performance based on average water temperature of 108° at mixing valve outlet

439 GRADE STAINLESS STEEL HEAT EXCHANGER

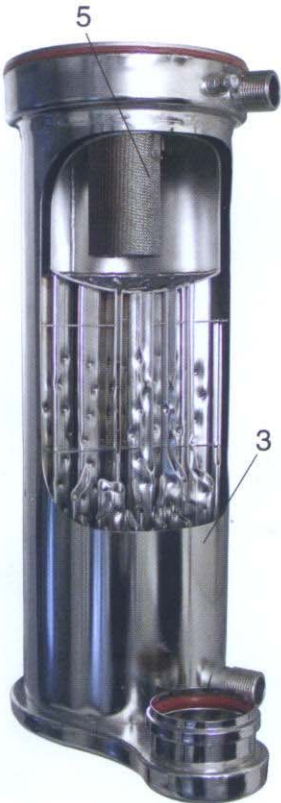
Vertical Firetube Design. Impervious to chloride cracking. Unparalleled resistance to corrosion.

HIGHEST WATER CONTENT IN THE INDUSTRY

- Ideal for small zones without short cycling
- Stable temperature control
- Low pressure drop
- Less sensitive to water flow

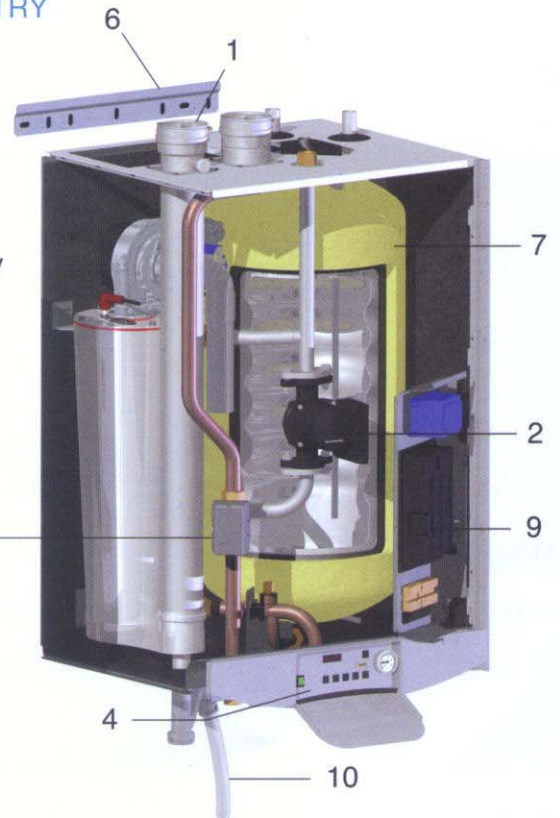
SELF CLEANING /SELF DESCALING

Condensate washes combustion residue away when streaming down the tubes resulting in a constant efficiency and reduced maintenance.



Legend

- 3" Flue connection - 1
- 3 Speed System Circulator - 2
- ASME Stainless steel heat exchanger - 3
- Control panel with digital display - 4
- Stainless steel premix gas burner - 5
- Wall bracket - 6
- Insulated "tank-in-tank" water heater - 7
- 3-way valve - 8
- Honeywell MCBA control on swing door - 9
- Condensate Drain Assembly - 10



Available with optional wall kit or floor stand



TriangleTube
Hot Water Specialists

1 Triangle Lane - Blackwood, NJ 08012

E-mail: sales@triangletube - www.triangletube.com

Tel: (856) 228 8881

Fax: (856) 228 3584

Member of

